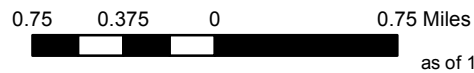


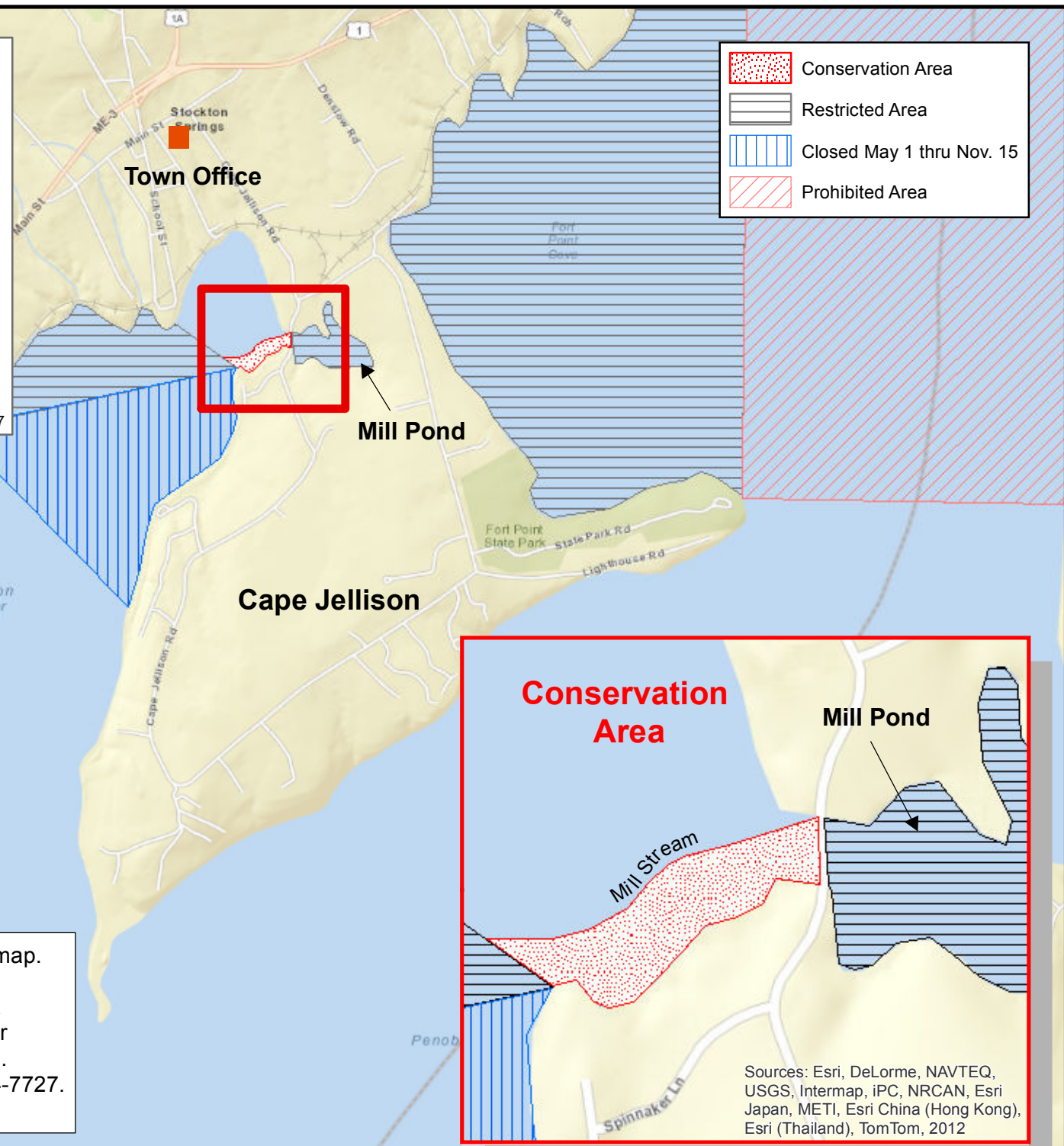


# Area Closed for Conservation

For more information,  
contact Darrin Moody 567-3404



	Conservation Area
	Restricted Area
	Closed May 1 thru Nov. 15
	Prohibited Area



PLEASE NOTE: This is not an all-inclusive map. Please reference the Maine Department of Marine Resources Shellfish Harvesting Area Classification Map - Pollution Area No. 35 for complete shellfish designations for the Town. Questions? Call 1-800-232-4733 or 207-624-7727. [www.maine.gov/dmr](http://www.maine.gov/dmr)

Sources: Esri, DeLorme, N. Kong), Esri (Thailand), TomTom, 2012

Sources: Esri, DeLorme, NAVTEQ, USGS, Intermap, iPC, NRCAN, Esri Japan, METI, Esri China (Hong Kong), Esri (Thailand), TomTom, 2012